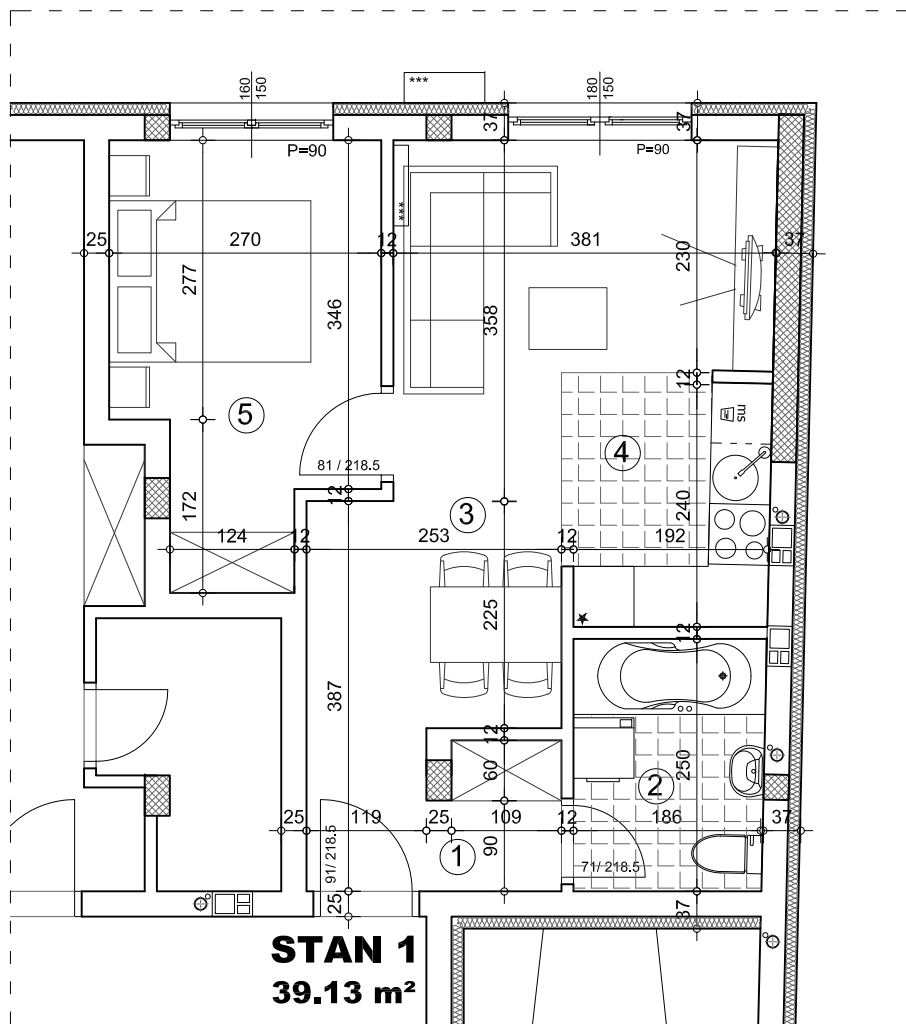


OSNOVA STANA 1:75

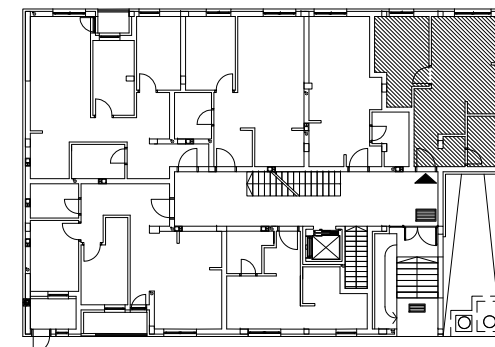


ulica Neimarova 38-40

STAN 1 - dvosoban

	pod	površina
1 ULAZ	parket	3.78 m ²
2 KUPATILO	ker.pl.	4.73 m ²
3 DNEVNA SOBA	parket	16.55 m ²
4 KUHINJA	ker.pl.	5.08 m ²
5 SOBA	parket	10.19 m ²
UKUPNO:		40.34 m²
UKUPNO REDUKOVANO -3%:		39.13 m²

OSNOVA PRIZEMLJA



ulica



PRIZEMLJE/STAN 1