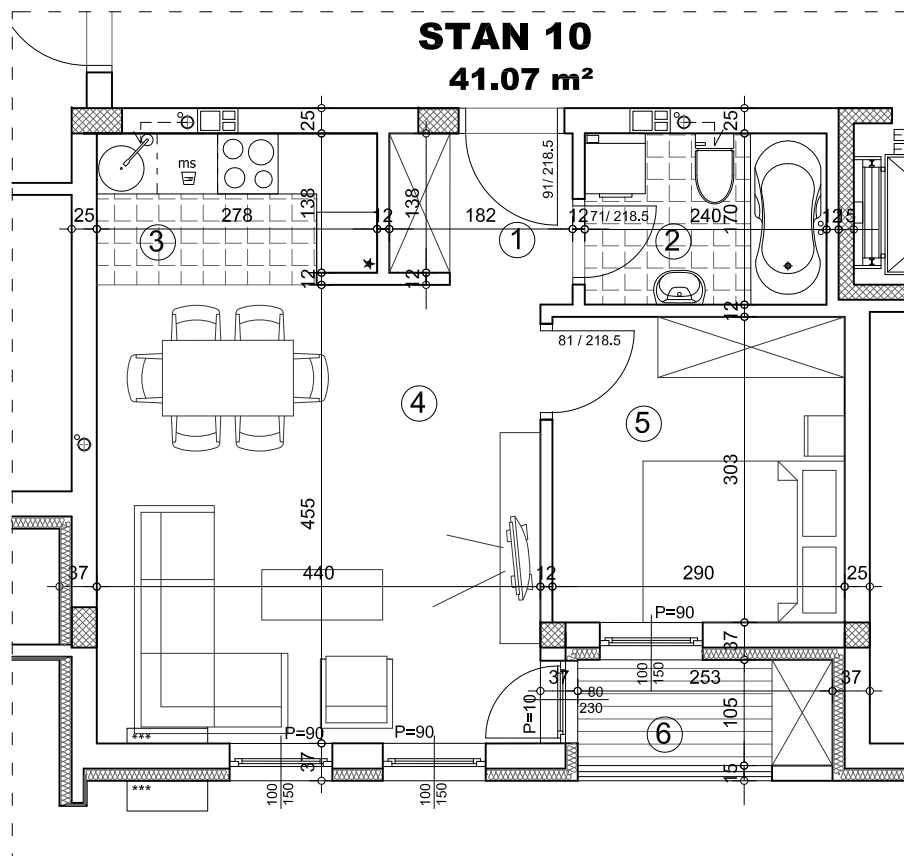


PREMIUM GRADNJA doo

OSNOVA STANA 1:75



STAN 10 - dvosoban

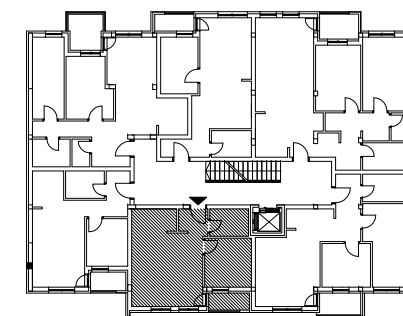
		pod	površina
1	ULAZ	parket	2.72 m ²
2	KUPATILO	ker.pl.	4.07 m ²
3	KUHINJA	ker.pl.	4.10 m ²
4	DNEVNA SOBA	parket	20.01 m ²
5	SOBA	parket	8.78 m ²
6	TERASA	ker.pl.	2.65 m ²

UKUPNO: 42.34 m²

UKUPNO REDUKOVANO -3%: 41.07 m²



OSNOVA 1.SPRATA



ulica



ulica Neimarova 38-40

1.SPRAT/STAN 10