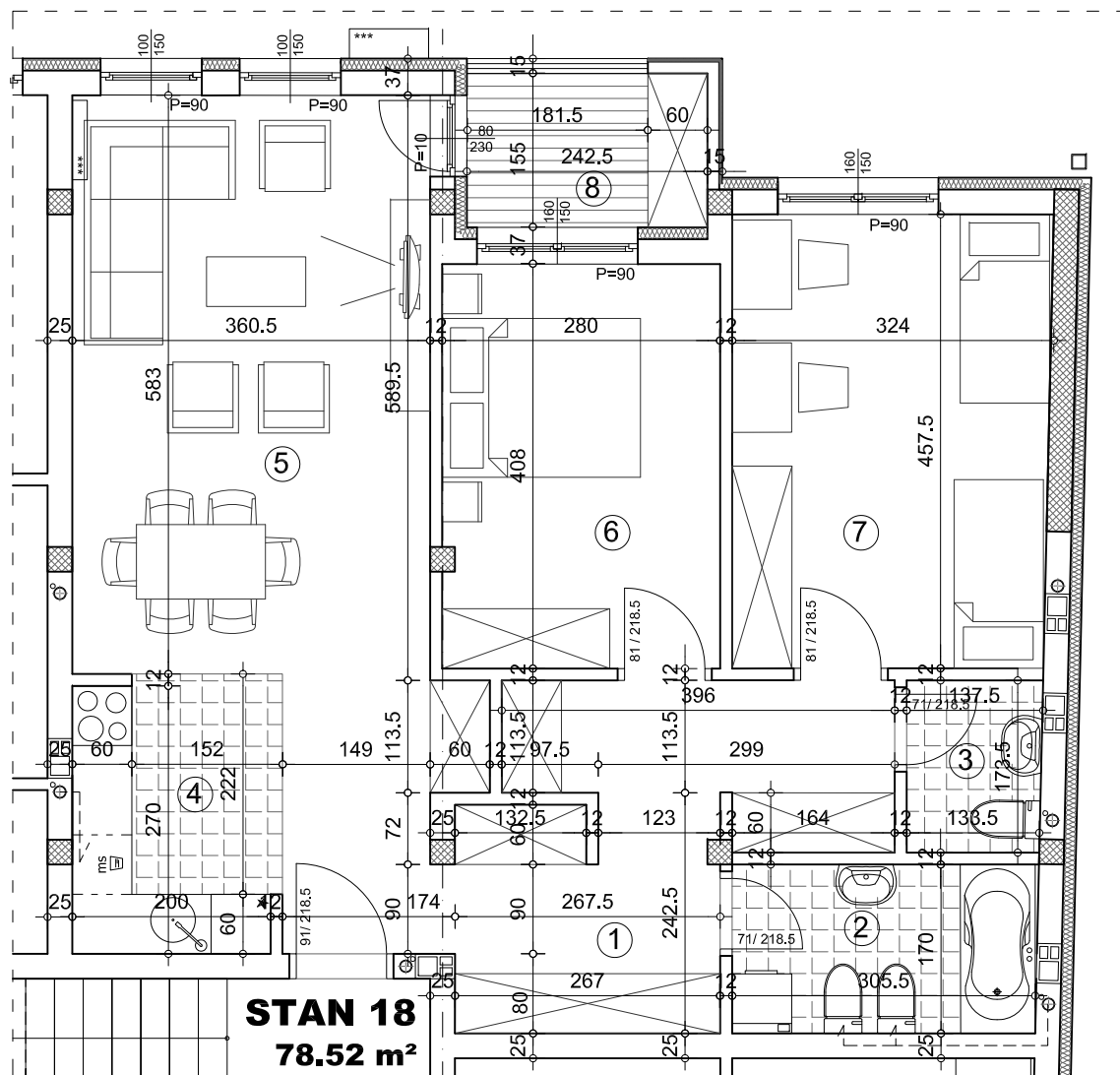


PREMIUM GRADNJA doo

OSNOVA STANA 1:75



STAN 18
78.52 m²

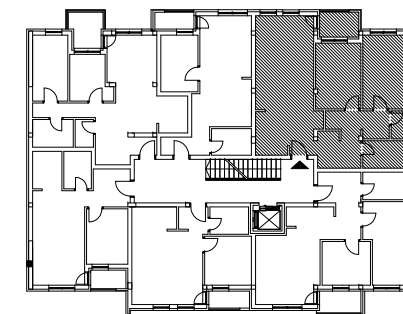


STAN 18 - trosoban

		pod	površina
1	ULAZ	parket	14.31 m ²
2	KUPATILO	ker.pl.	5.22 m ²
3	WC	ker.pl.	2.35 m ²
4	KUHINJA	ker.pl.	5.83 m ²
5	DNEVNA SOBA	parket	23.49 m ²
6	SOBA	parket	11.39 m ²
7	SOBA	parket	14.59 m ²
8	TERASA	ker.pl.	3.76 m ²
UKUPNO:			80.95 m²
UKUPNO REDUKOVANO -3%:			78.52 m²



OSNOVA 2.SP RATA



ulica



ulica Neimarova 38-40

2.SP RAT/STAN 18