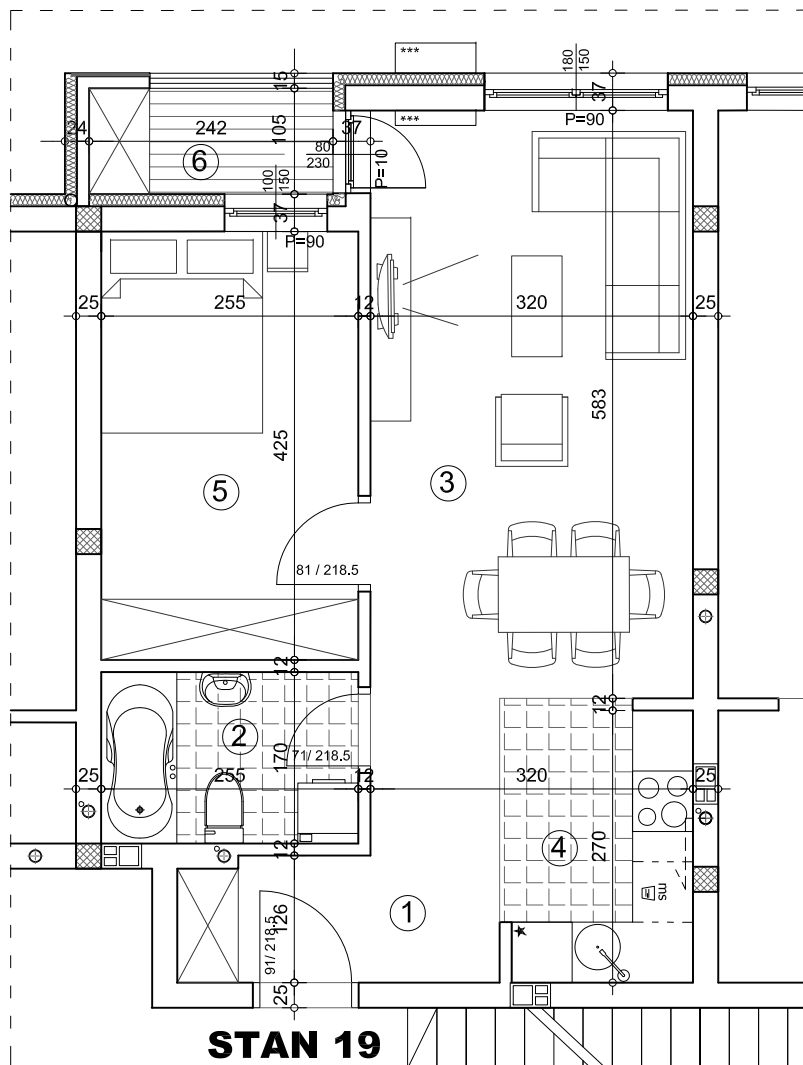


OSNOVA STANA 1:75



STAN 19
46.16 m²



STAN 19 - dvosoban

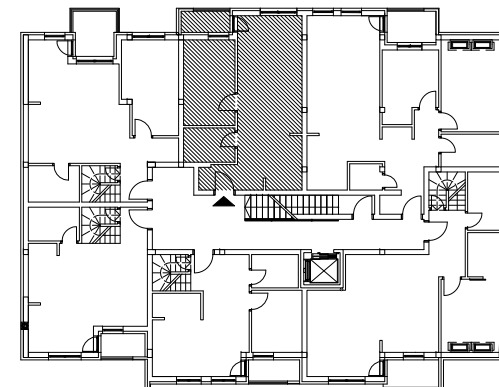
	pod	površina
1 ULAZ	parket	3.95 m ²
2 KUPATILO	ker.pl.	4.34 m ²
3 DNEVNA SOBA	parket	20.66 m ²
4 KUHINJA	ker.pl.	5.27 m ²
5 SOBA	parket	10.84 m ²
6 TERASA	ker.pl.	2.54 m ²

UKUPNO: 47.58 m²

UKUPNO REDUKOVANO -3%: 46.16 m²



OSNOVA POTKROVLJA



ulica



ulica Neimarova 38-40

POTKROVLJE/STAN 19