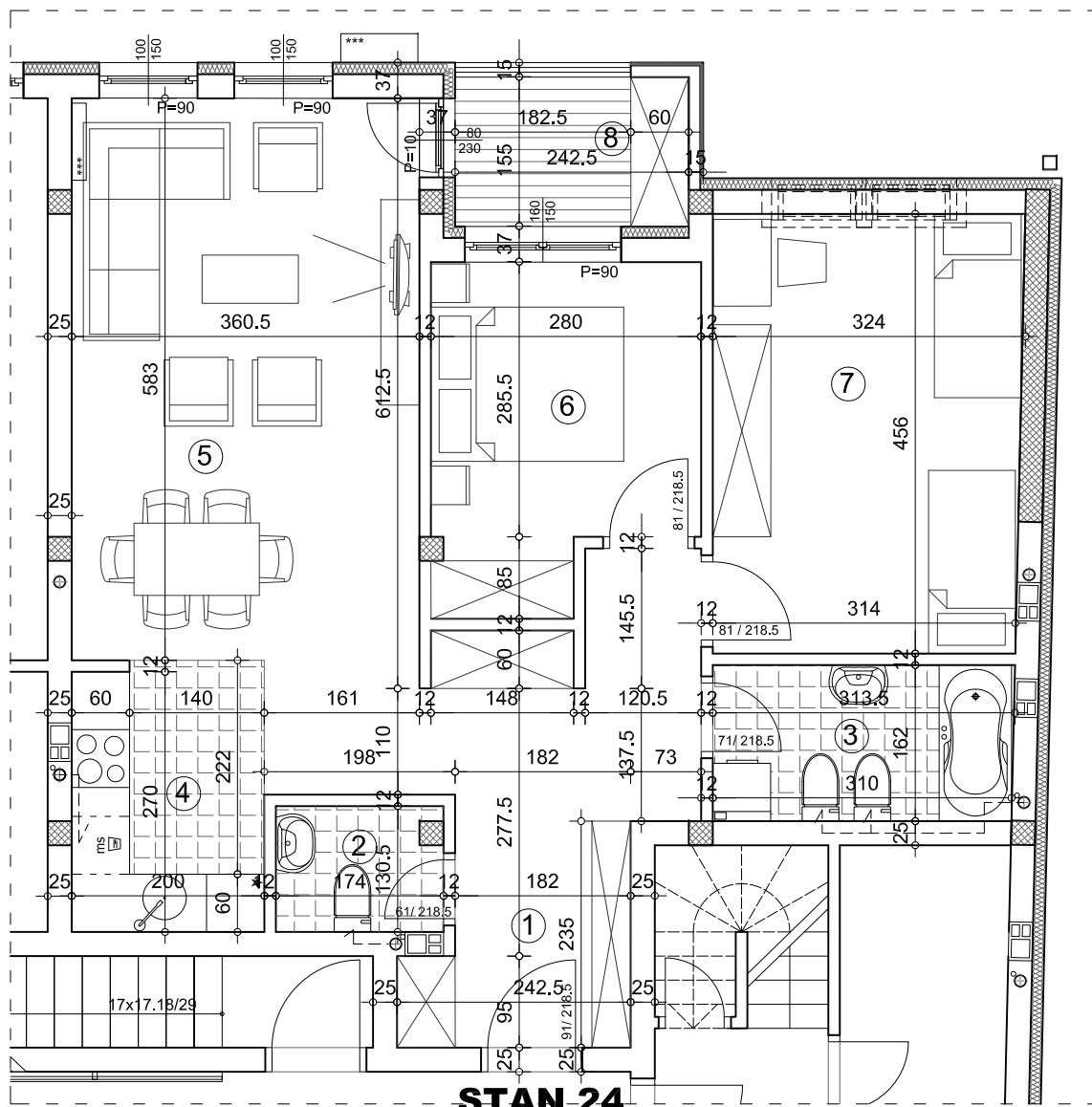


PREMIUM GRADNJA doo

OSNOVA STANA 1:75



STAN 24

72.79 m²

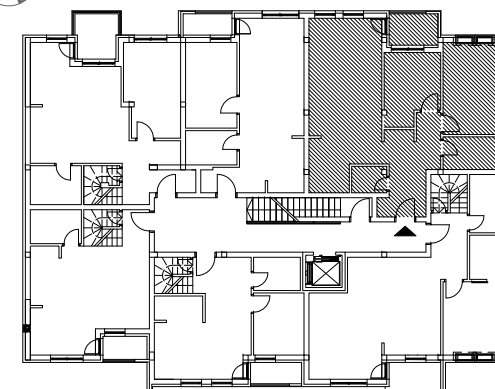


STAN 24 - trosoban

	pod	površina
1 ULAZ	parket	11.41 m²
2 WC	ker.pl.	2.21 m²
3 KUPATILO	ker.pl.	5.05 m²
4 KUHINJA	ker.pl.	5.56 m²
5 DNEVNA SOBA	parket	23.27 m²
6 SOBA	parket	9.22 m²
7 SOBA	parket	14.57 m²
8 TERASA	ker.pl.	3.76 m²
UKUPNO:		75.04 m²
UKUPNO REDUKOVANO -3%:		72.79 m²



OSNOVA POTKROVLJA



ulica



ulica Neimarova 38-40

POTKROVLJE/STAN 24