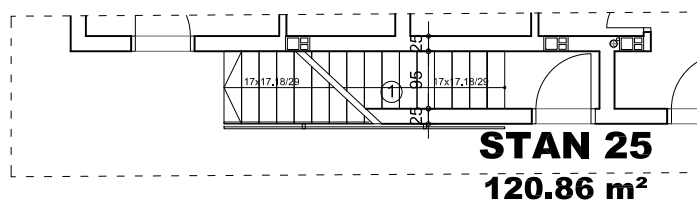
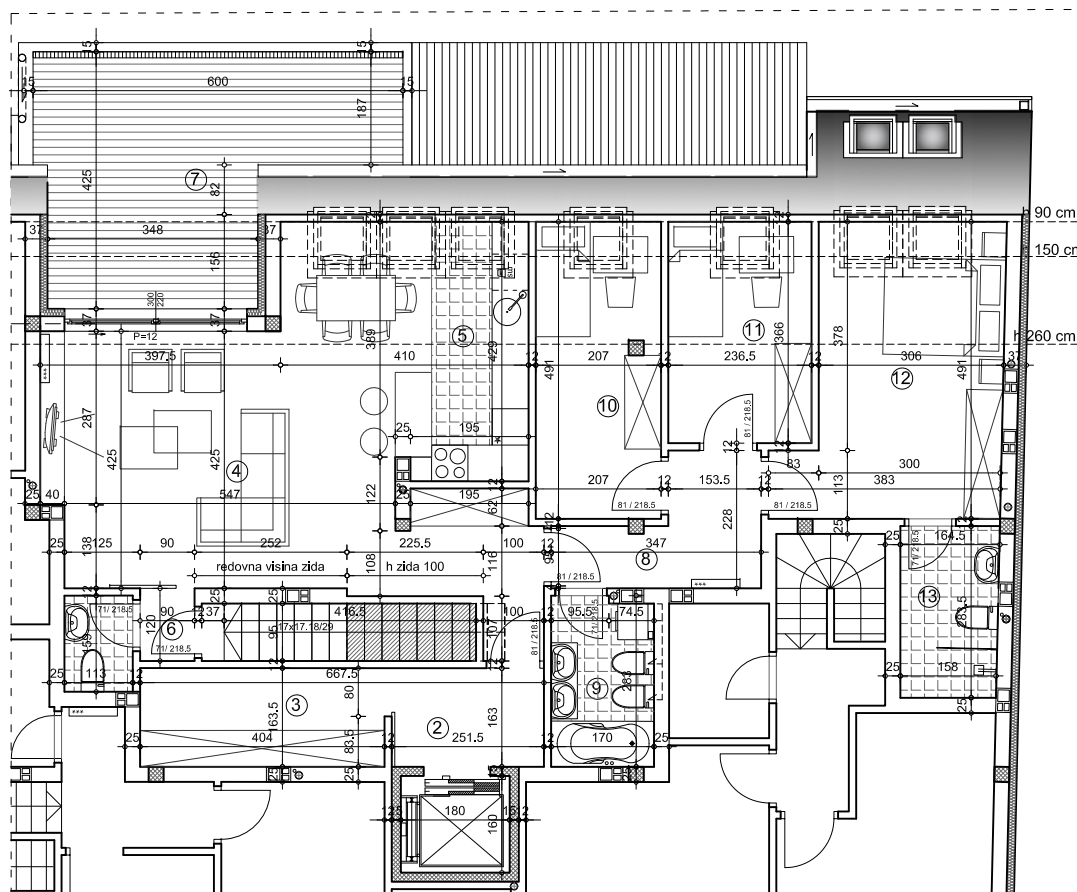


PREMIUM GRADNJA doo

OSNOVA STANA donji nivo 1:125



OSNOVA STANA gornji nivo 1:125



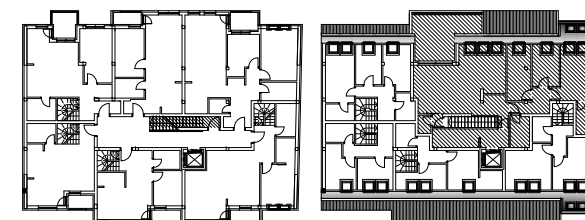
STAN 25 - četvorosoban (penthouse)

	pod	površina
1	ULAZ	parket 5.90 m ²
2	ULAZ	parket 4.10 m ²
3	GARDEROBER	parket 6.68 m ²
4	DNEVNA SOBA	parket 34.09 m ²
5	KUHINJA	ker.pl. 5.95 m ²
6	WC	ker.pl. 2.98 m ²
7	TERASA	ker.pl. 19.72 m ²
8	HODNIK	parket 5.46 m ²
9	KUPATILO	ker.pl. 4.71 m ²
10	SOBA	parket 8.98 m ²
11	SOBA	parket 7.30 m ²
12	SOBA	parket 14.15 m ²
13	KUPATILO	ker.pl. 4.58 m ²

UKUPNO: 124.60 m²

UKUPNO REDUKOVANO -3%: 120.86 m²

OSNOVA POTKROVLJA OSNOVA DUPLEKSA



ulica

ulica



ulica Neimarova 38-40

POTKROVLJE/STAN 25

