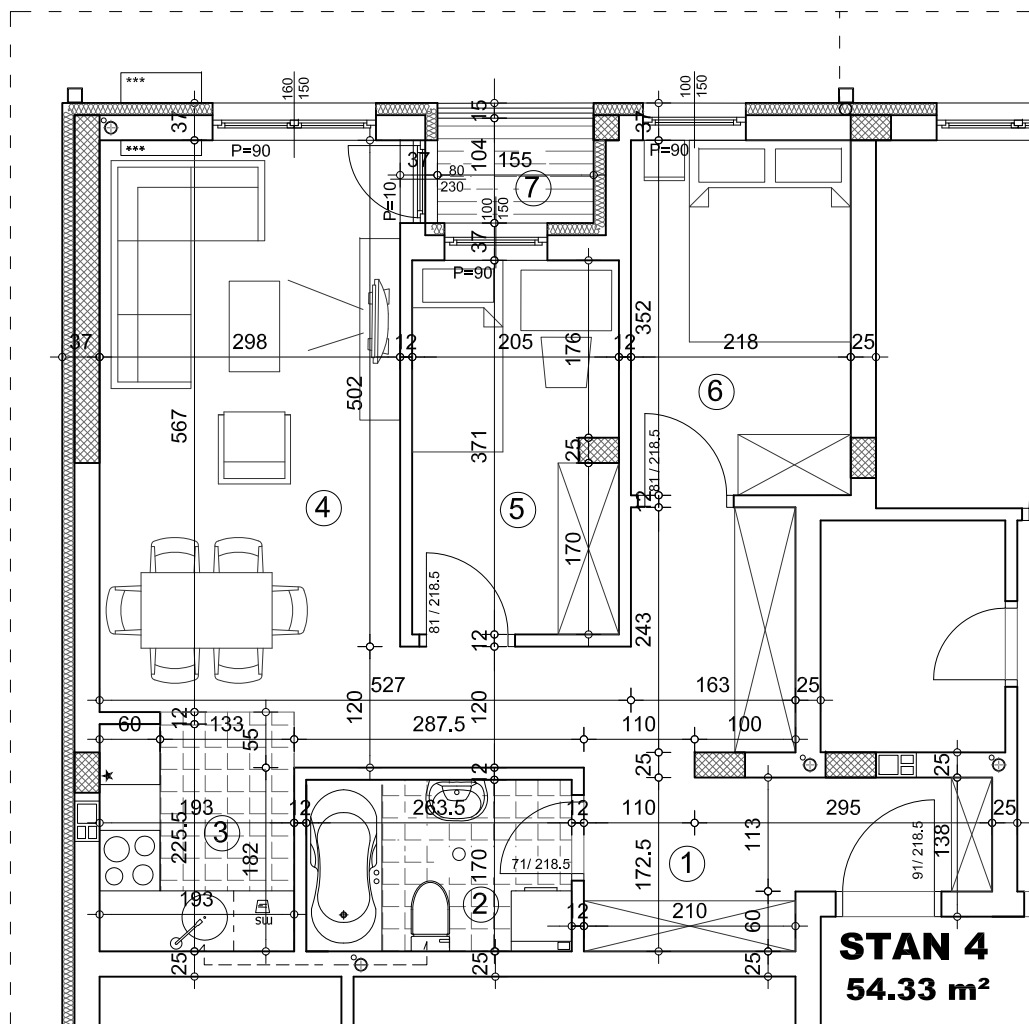


## OSNOVA STANA 1:75

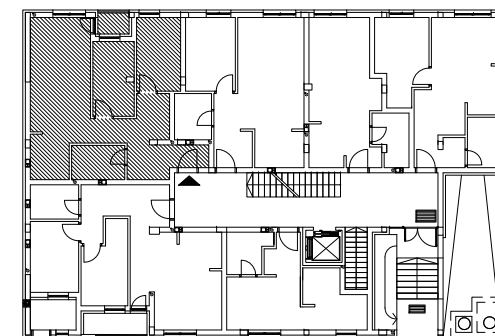


### STAN 4 - trosoban

	pod	površina
1 ULAZ	parket	13.32 m <sup>2</sup>
2 KUPATILO	ker.pl.	4.48 m <sup>2</sup>
3 KUHINJA	ker.pl.	4.51 m <sup>2</sup>
4 DNEVNA SOBA	parket	16.90 m <sup>2</sup>
5 SOBA	parket	7.51 m <sup>2</sup>
6 SOBA	parket	7.67 m <sup>2</sup>
7 TERASA	ker.pl.	1.61 m <sup>2</sup>
<b>UKUPNO:</b>		<b>56.01 m<sup>2</sup></b>
<b>UKUPNO REDUKOVANO -3%:</b>		<b>54.33 m<sup>2</sup></b>



### OSNOVA PRIZEMLJA



ulica



ulica Neimarova 38-40

PRIZEMLJE/STAN 4