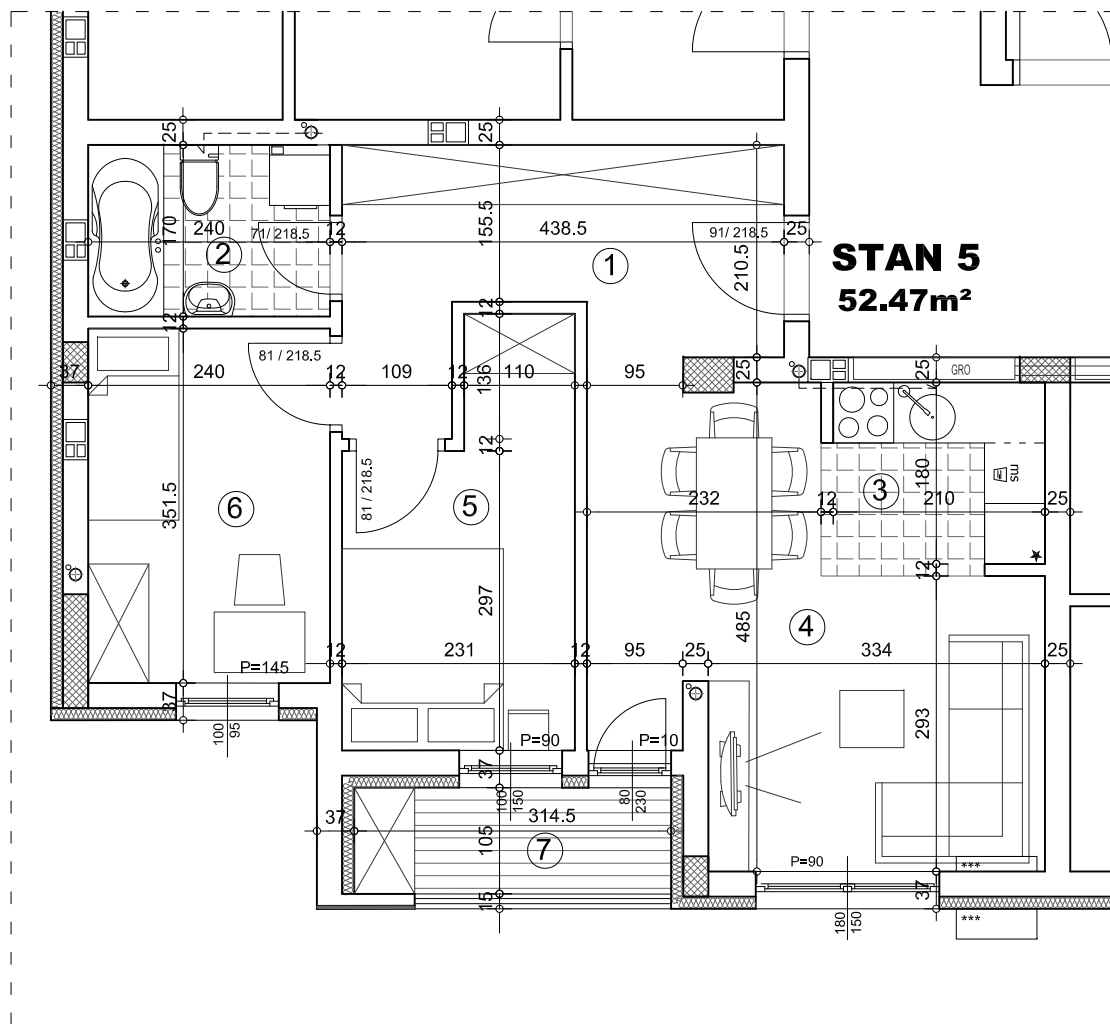


OSNOVA STANA 1:75

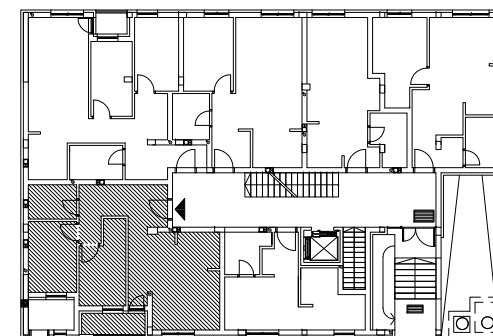


STAN 5 - trosoban

	pod	površina
1 ULAZ	parket	9.38 m²
2 KUPATILO	ker.pl.	4.08 m²
3 KUHINJA	ker.pl.	4.12 m²
4 DNEVNA SOBA	parket	16.32 m²
5 SOBA	parket	8.38 m²
6 SOBA	parket	8.44 m²
7 TERASA	ker.pl.	3.39 m²
UKUPNO:		54.10 m²
UKUPNO REDUKOVANO -3%:		52.47 m²



OSNOVA PRIZEMLJA



ulica



ulica Neimarova 38-40

PRIZEMLJE/STAN 5