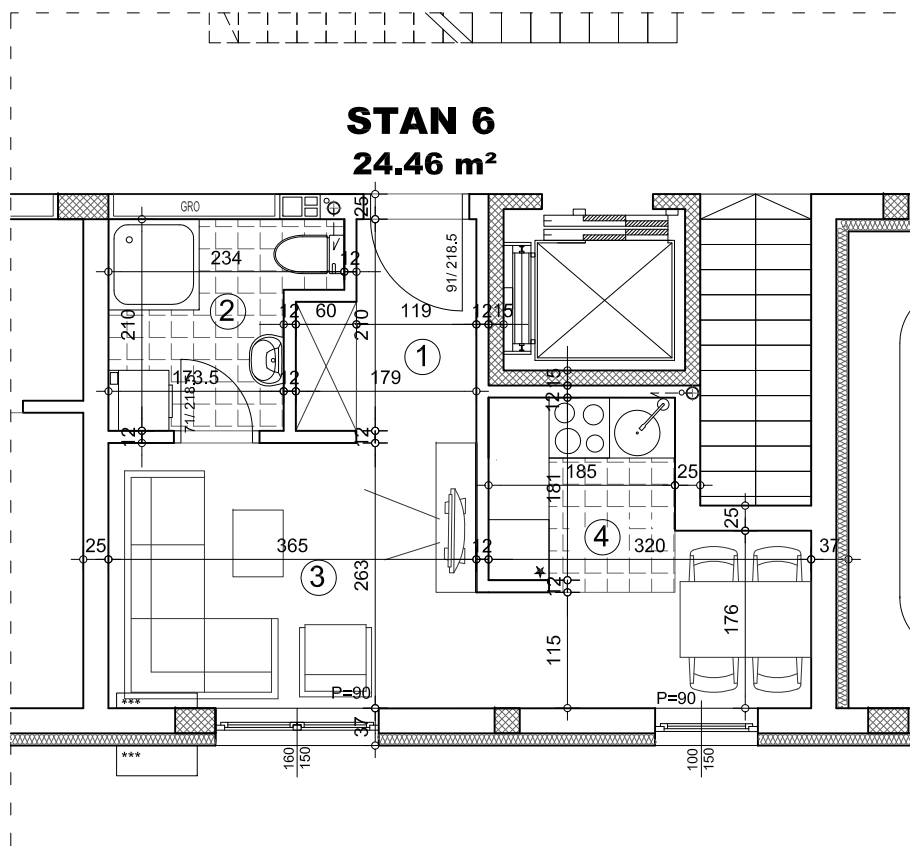


PREMIUM GRADNJA doo

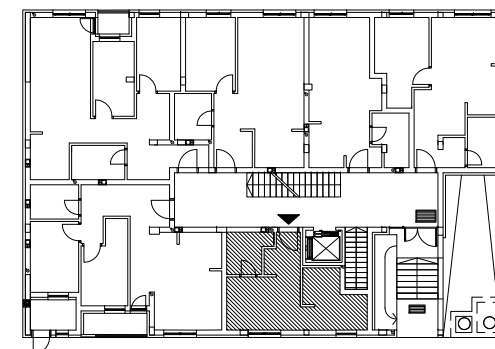
OSNOVA STANA 1:75



STAN 6 - garsonjera

		pod	površina
1	ULAZ	parket	3.41 m ²
2	KUPATILO	ker.pl.	4.07 m ²
3	DNEVNA SOBA	parket	9.74 m ²
4	KUHINJA SA TRPEZARIJOM	ker.pl./ parket	8.00 m ²
		UKUPNO:	25.22 m²
		UKUPNO REDUKOVANO -3%:	24.46 m²

OSNOVA PRIZEMLJA



ulica



ulica Neimarova 38-40

PRIZEMLJE/STAN 6