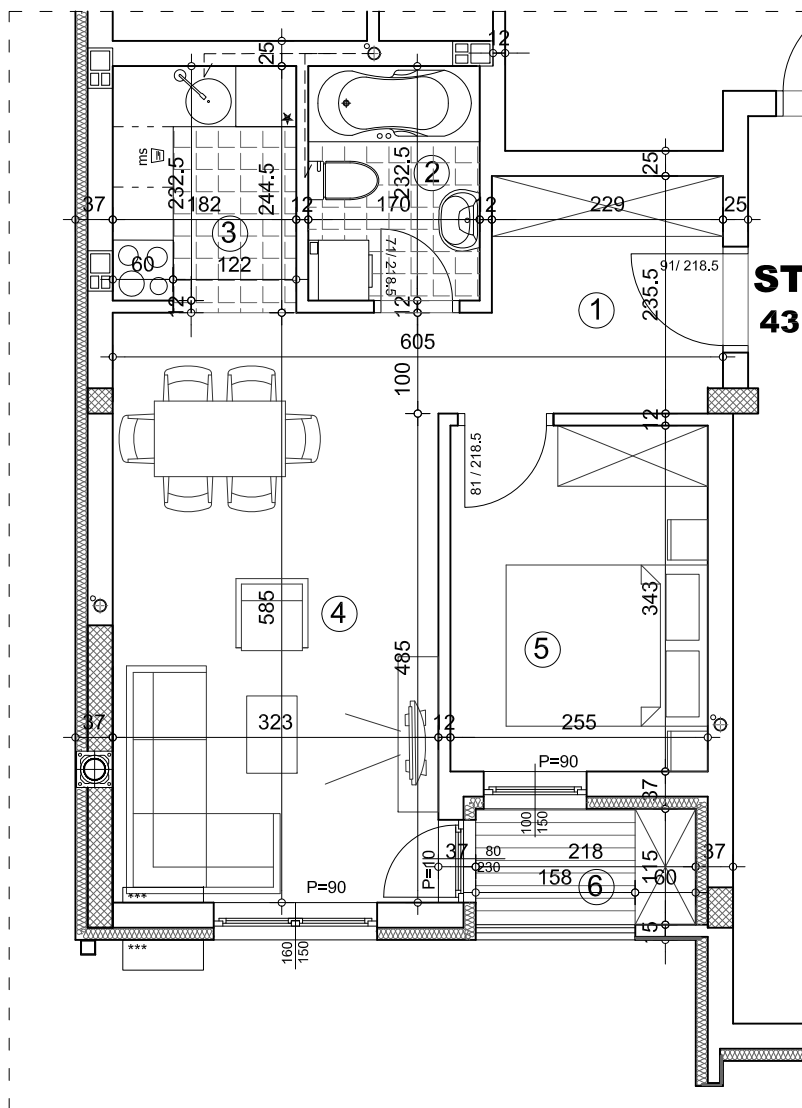


OSNOVA STANA 1:75



STAN 9
43.04 m²



ulica Neimarova 38-40

STAN 9 - dvosoban

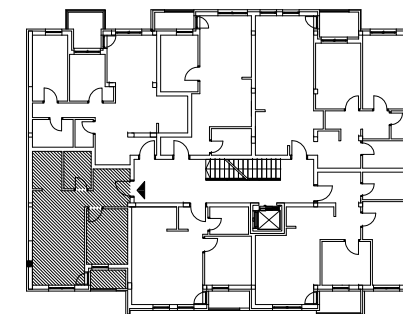
		pod	površina
1	ULAZ	parket	5.89 m ²
2	KUPATILO	ker.pl.	3.95 m ²
3	KUHINJA	ker.pl.	4.38 m ²
4	DNEVNA SOBA	parket	18.88 m ²
5	SOBA	parket	8.75 m ²
6	TERASA	ker.pl.	2.51 m ²

UKUPNO: 44.37 m²

UKUPNO REDUKOVANO -3%: 43.04 m²



OSNOVA 1.SPRATA



ulica



1.SPRAT/STAN 9